

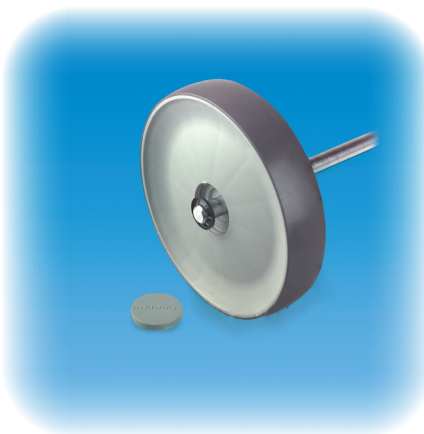
# Light equipment castor WT-150 PTE

- New and modern design
- Diameter 150 mm
  - Rolls smoothly - even on soft floors like fitted carpet
  - Rolls easily over obstacles
  - Low overall height
- Quick and easy assembly
- Simple construction
- Wheel centre of propene and thermoelastic tread
- Available also only the wheel = WI-150 PTE
- Other colours and logo/trademark to customer specification are possible.



## **Applications:**

cleaning trolleys, clothing racks, magazine racks and other light trolleys and equipment



- Tube fitting  
(inner dia of the  
furniture tube)
- Ø 16, 19 and 22mm
  - 17x17 and 22x22mm

Overall height 166mm

Offset 120mm

Tread width 30mm

Total width 48mm

Load capacity 35kg / wheel  
Wheel bore diameter 12 mm

Manner Castors  
Tel. +358-19-222 001  
Fax +358-19-248 2000  
manner@manner.fi  
www.manner.fi

  
www.manner.fi